

# NKT NATIONAL COLLEGE OF EDUCATION FOR WOMEN

(Autonomous)

## ONLINE INTERNATIONAL FACULTY DEVELOPMENT PROGRAMME ON ESTABLISHING RESEARCH BEYOND THE HORIZON

26<sup>th</sup> to 30<sup>th</sup> May, 2020

**N.K.T. National College of Education for Women**  
Re-Accredited with 'A' Grade with CGPA of 3.26 / 4.00 by NAAC  
Affiliated to Tamil Nadu Teachers Education University  
Chennai, Tamil Nadu, India.

Research and Development Centre invites you to participate in  
**Online International Faculty Development Programme**  
On  
**"Establishing Research Beyond the Horizon"**  
26<sup>th</sup> - 30<sup>th</sup> May 2020

**Organizing Committee:**  
Patron  
**Dr. M. Arumugam**  
Director  
**Dr. S. Chamundeswari**  
Principal  
Convener  
**Dr. N. Kalai Arasi**  
Associate Professor & Controller of Examinations  
Research and Development Centre Co-ordinator  
Organising Secretary  
**Dr. S. Malathi**  
Associate Professor  
IQAC Co-ordinator

**Target Groups:**  
Faculty Members from  
Colleges and  
Universities around the  
World

**Registration**  
Click the below link to  
register:  
<https://forms.gle/20CwJfcvMfRjQ3e3cA>

**Programme Co-ordinators:**  
**Mrs. A.J. Komala**  
Assistant Professor of Economics  
**Mrs. Enid Ruth**  
Assistant Professor of Education

**Day 1:** Date: 26-05-2020  
11.00 am to 12.30 pm  
**Prof. Arun Prasad**  
University of Dubai  
Topic  
Partial Least Square- Structural  
Equation Modeling

**Day 2:** Date: 27-05-2020  
11.00 am to 12.30 pm  
**Prof. Ashutosh Biswal**  
Department of Education (CASE),  
The M.S. University of Baroda  
Topic  
Construction and Validation  
of Tool Including Factor Analysis

**Day 3:** Date: 28-05-2020  
11.00 am to 12.30 pm  
**Prof. Usha Ramanathan**  
Nottingham Business School, UK  
Topic  
Case-Study Research Methods and  
Applications

**Day 4:** Date: 29-05-2020  
11.00 am to 12.30 pm  
**Prof. D. Kumaran**  
Former Professor in Head  
Department of Education  
University of Madras  
Topic  
Translation as a  
Method of Research

**Day 5:** Date: 30-05-2020  
1.00 pm to 4.30 pm  
**Prof. M.P. Ganesh**  
IT, Hyderabad  
Topic  
Survey Research in Social  
Sciences - Advantages and Possible  
Biases

**Contact Details:**  
• Mrs. A. H. Komala  
+91 9840918285  
• Mrs. A. Enid Ruth  
+91 9841770279

• No Registration fee  
• Certificates will be provided to all the Participants  
• The Webinar Zoom link will be shared to the registered participants through  
WhatsApp & E-mail

On Day 1, the 26<sup>th</sup> May, the Programme Director, Dr. S. Chamundeswari, Principal welcomed the Resource Expert, members on the panel and participants of the International Online Faculty Development Programme on Establishing Research Beyond the Horizon. On invitation the Patron, Prof. M. Arumugam, Secretary, Sriman NKT National Education Society and NKT National College of Education for Women, delivered the keynote address.

The session was handled by Prof Arun Prasad, Associate Prof, University of Dubai under the topic "Partial Least Square -Structural Equation Modeling".

The screenshot shows a Zoom meeting interface. On the left, a presentation slide titled "Measurement models" is displayed. The slide contains the following text:

- Measurement models represent the relationships between constructs and their corresponding indicator variables
- A scale (index) is a set of reflective indicators used to measure a construct

The diagram shows a path model with three latent variables: CSOR, ATTR, and COMP. CSOR and ATTR are measured by four indicators each (labeled 'item\_1' to 'item\_4' and 'attr\_1' to 'attr\_4' respectively). COMP is measured by three indicators (labeled 'comp\_1', 'comp\_2', and 'comp\_3'). Arrows indicate the relationships between the latent variables and their indicators, and between CSOR and COMP, and between ATTR and COMP.

Below the diagram, the slide lists survey items:

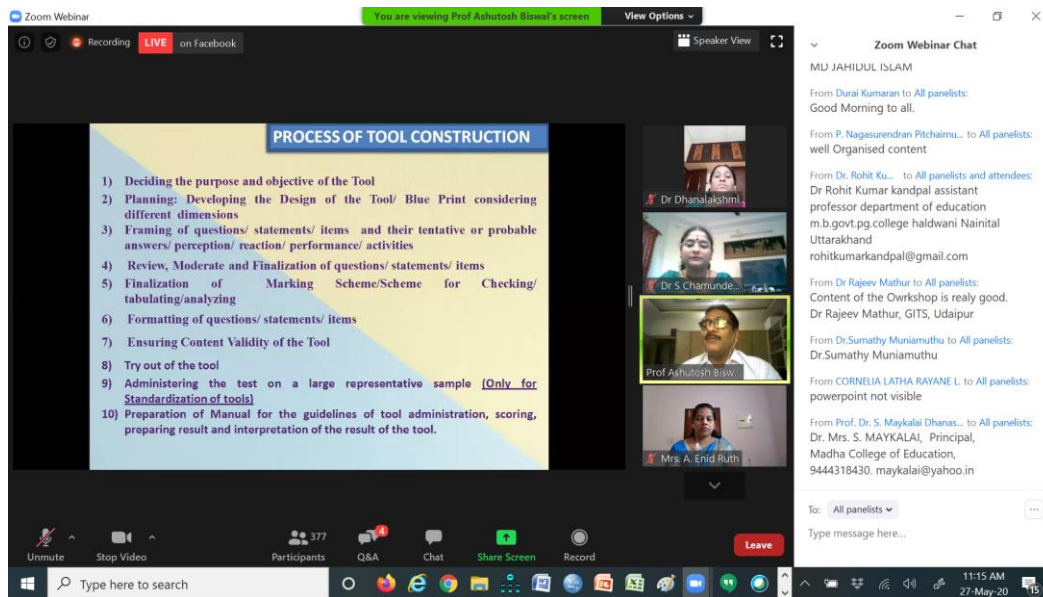
- comp\_1: [The company] is a top competitor in its market
- comp\_2: As far as I know, [the company] is recognized worldwide
- comp\_3: I believe that [the company] performs at a premium level

On the right side of the Zoom window, a grid of participants is visible. The participants listed are: Prof Arun Prasad, Dr S Chamundeswari, Dr V Jayashree..., Mrs. A. Enid Ruth, Dr S Malathi, Dr Dhanalakshmi, Ms A.H.Komala, and Dr. N. Kalaiarasi. The bottom of the Zoom window shows controls for Mute, Stop Video, Participants (278), Q&A (5), Chat (12), Share Screen, Record, and a Leave button.

He discussed about structural model and measurement model, where structural model describes the relation bet the variables and measurement variables which has outer model and inner model. Further he explained about exogenous variable which explains the quality or performance of variables endogenous variable-which has both dependant and independent variables. He also explained the Reflective and formative measurement,categorical variables,what is AVE-Average Variance Extraction.

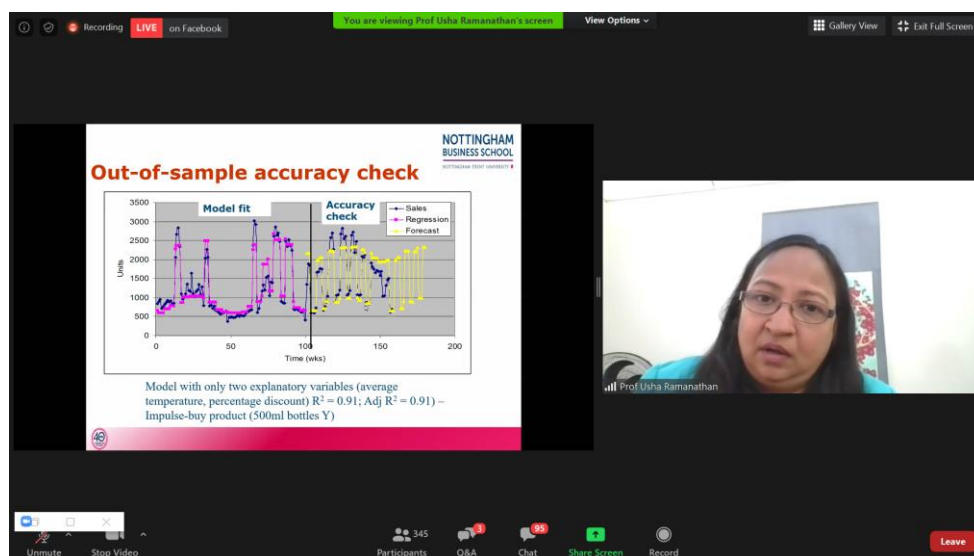
The Prof. Arun Prasad explained in detail about the powerful structural equation modeling software AMOS which will definitely help to support the research by extending standard multivariate analysis methods including regression, factor analysis, correlation and analysis of variance. The vote of thanks was delivered by Dr. V. Jayashree Priyadharsini, Assistant Professor of Biological Science-Education.

On Day 2 the session was headed by Prof. Ashutosh Biswal, Dept of Educational Psychology from the university of Baroda. Programme Director, Dr. N. Kalai Arasi, Controller of Examinations and Programme Convenor welcomed the Resource Expert. His topic was "Construction & Validation of tool including factor analysis". Prof. Biswal discussed about the tools of Data collection which are classified as available tools, Self made tools and Adopted tools.



Sir also elaborated on the process of tool construction. He spoke about the evidence of validity, criterion validity and factor analysis. Finally he dealt how validity can be measured using different tools like achievement test, observation, check list, reaction scale, etc. The vote of thanks was delivered by Ms. P. Sangeetha, Assistant Professor of English-Education.

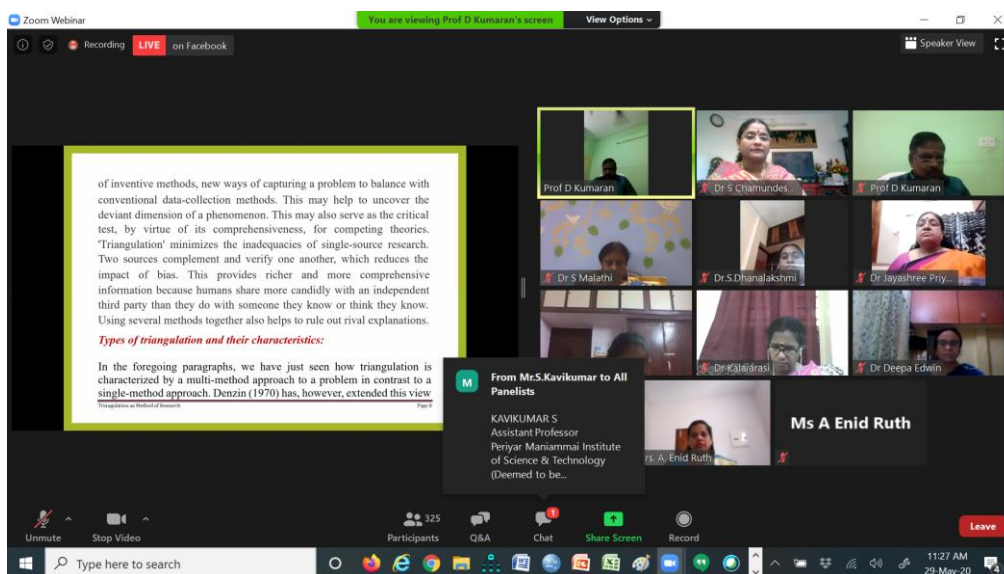
On Day 3 the resource expert for the session was Prof. Usha Ramanathan from Nottingham Business School, UK and she spoke under the topic Case Study Research method & Applications. The Resource Expert was introduced and all members on the panel and the participants were welcomed by the Principal, Dr. S. Chamundeswari.



Prof. Usha Ramanathan drifted her session by discussing the purpose of case-writing, difference between qualitative & quantitative research method then she elaborated about the case study approach with involves story telling, scenario based approach and problem based approach. She highlighted that educational value of Case study is to evaluate and identify the relevant facts. Finally madam discussed on the attributes of Reference Demand Model followed by two examples which she did as a case study research.

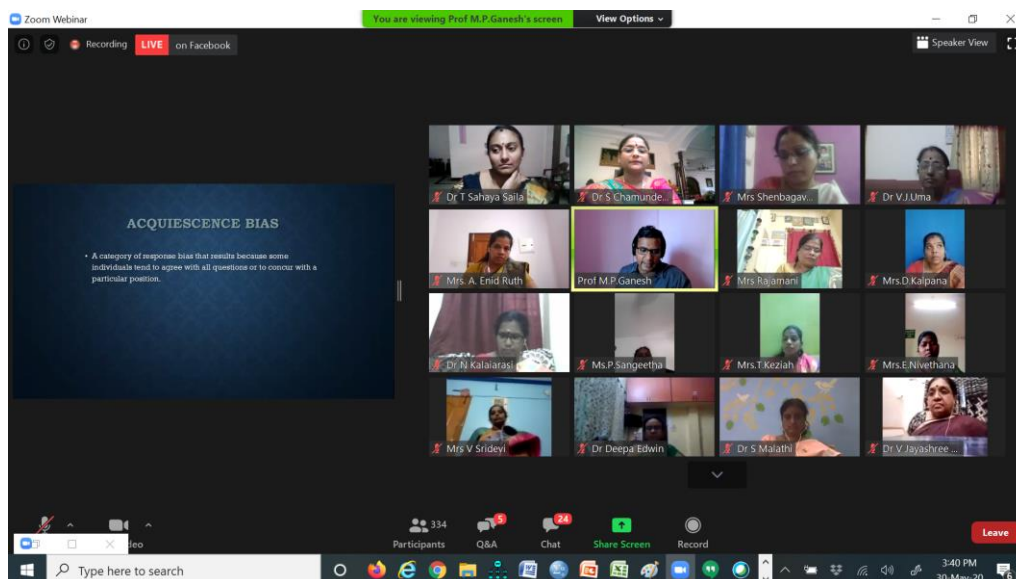
The vote of thanks was delivered by Mrs. A.H. Komala, Assistant Professor of Economics-Education.

On Day 4 the session was headed by Prof. D. Kumaran, Former Professor and Head, Department of Education, University of Madras under the topic Triangulation as a method of research was introduced by Dr. S. Malathi, the Co-ordinator of IQAC and the Organizing Secretary.

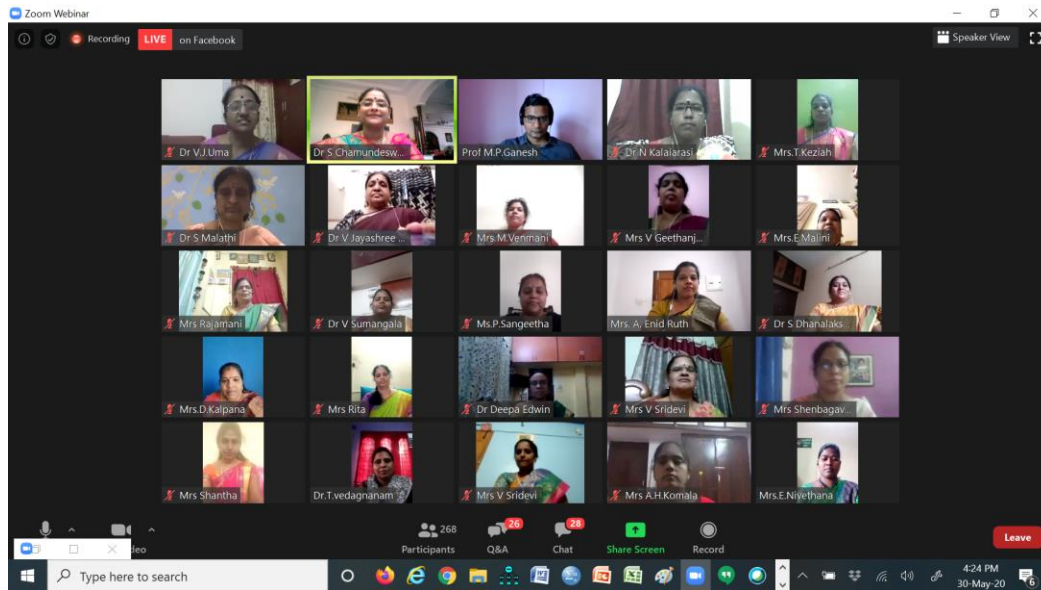


Sir explained the meaning of triangulation which is the use of two or more data collection method in the study of some aspects of human behaviour. Professor further discussed usefulness and effectiveness of triangulation . Sir explained the 7 types of triangulation and also the benefits and disadvantages of triangulation. He finally concluded that triangulation depends on coordination & collaboration of those who are actively involved in collecting data & response.

Day 5 the last day of this Faculty Development Programme was chaired by Prof. M.P. Ganesh, from IIT Hyderabad. He was introduced by the Principal, Dr. S. Chamundeswari, Programme Director. The topic for the session was Survey Research in Social Sciences- Advantages & Possible Biases.



Sir discussed on what is survey, how to gather information in a quick, inexpensive, efficient, accurate and flexible. Types of survey which is cross sectional and longitudinal survey and 3 ways of communicating with respondents like personal interview, telephone interview and self administered questionnaire. Further he discussed about problems and errors in survey respondents, types of bias like acquiescence bias, extremity bias, interviewer bias, social desirability bias, administrative error and other errors in data processing, sample selection, interviewer error and steps to handle the administrative error.



Mrs. A. Enid Ruth Assistant Professor of Education presented the consolidated Report of the Faculty Development Programme on Establishing Research beyond the Horizon and vote of thanks was delivered by Dr. S. Dhanalakshmi, Librarian and the Programme came to a closure with a Screen Shot of all Faculty members on one screen.

